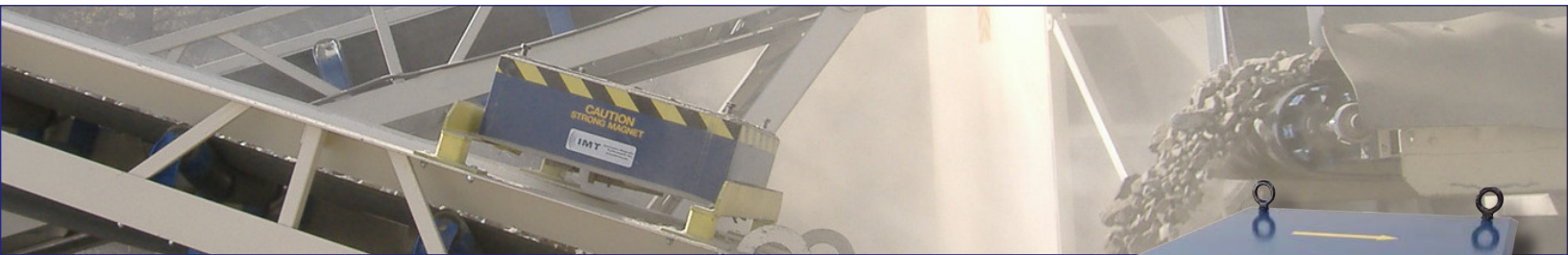




G5 BELT CONVEYOR MAGNETS



SUSPENDED PLATE MAGNETS

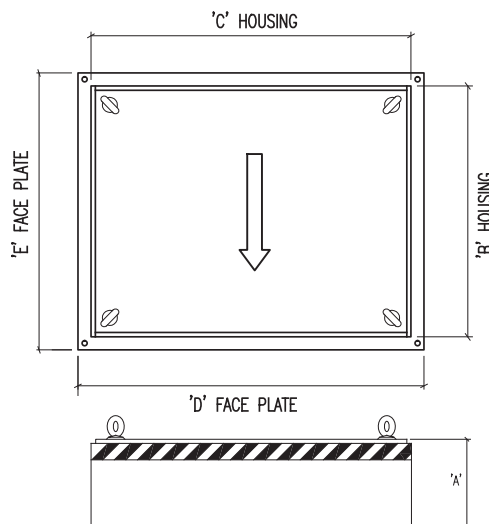
Extract ferrous contaminants from industrial belt conveyors and provide protection for downstream equipment. Permanent magnetic forces provide continuous and effective removal of unwanted tramp metal and will increase uptime, reduce maintenance costs and provide a metal free product.

INTRODUCING THE IMT G5 SERIES

STRENGTH IN DESIGN - The IMT G5 magnetic core design focuses the magnetic field directly into the product stream, unlike some competitor models who are prone to project around the magnet which introduces performance challenges and loss of strength.

ECONOMICAL - Unsure of how much tramp iron you will encounter? The G5 series suspended plate magnet allows operations to upgrade to continuous self-cleaning crossbelt separator option within minutes.

UPGRADEABLE - The SPM series magnet is the core of the G5 system which offers multiple upgrades such as cross-belt / inline self cleaning kits and the AMS actuated maintenance stand.



SPM mounted over a Head Pulley



SPM Model Specifications

BELT WIDTH	MODEL	A	B	C	D	E	WEIGHT (LBS)
24	SPM 2433-10	10.5	21	30	24	33	1205
30	SPM 3033-10	10.5	27	30	30	33	1675
36	SPM 3633-10	10.5	33	30	36	33	1870
42	SPM 4233-10	10.5	39	30	42	33	2230
48	SPM 4833-10	10.5	45	30	48	33	2625
54	SPM 5433-10	10.5	51	30	54	33	2995
60	SPM 6033-10	10.5	57	30	60	33	3335

Custom Sizes Available - Contact your local IMT Representative



QUALITY AT THE CORE™

WWW.IMT-INC.COM

APPLICATION WORKSHEET

Fill in application details below and submit via Email: sales@imt-inc.com or Fax: (778) 753-6234

Company: _____

Contact: _____

Address: _____

Phone: _____

City: _____

State/Prov: _____

Email: _____

Postal: _____

Country: _____

☐ Suspended Plate Magnet

☐ Electromagnet

☐ VIBRA-SEP

☐ Cross Belt Separator

☐ Magnetic Plate Separator

☐ Grate Magnet

☐ Magnetic Head Pulley

☐ Drum Separator

☐ Unknown

APPLICATION INFORMATION

Type of Material: _____ Bulk Density: _____

Particle Size Range: _____ Product Temp: _____

Max Lump Size: _____ % Moisture: _____

Ferrous Size Range: _____ Burden Depth: _____

CONVEYOR INFORMATION

Flat Belt ☐ Troughed Belt ☐ Conveyor Incline: _____ Ambient Temp: _____

Chute ☐ Vibratory ☐ Belt Width: _____ Head Pulley Dia: _____

Other (Please Specify): _____ Belt Thickness: _____ % Moisture: _____

Belt Speed: _____ Plant Voltage: _____

NOTES:



INNOVATIVE MAGNETIC TECHNOLOGIES INC.

Head Office: #1 3308 Appaloosa Road Kelowna, BC V1V 2W5 Canada
Telephone: (250) 491-5806 Toll Free: (888) 991-5806 Fax: (778) 753-6234
Website: www.imt-inc.com Email: sales@imt-inc.com



Quality at the Core™